

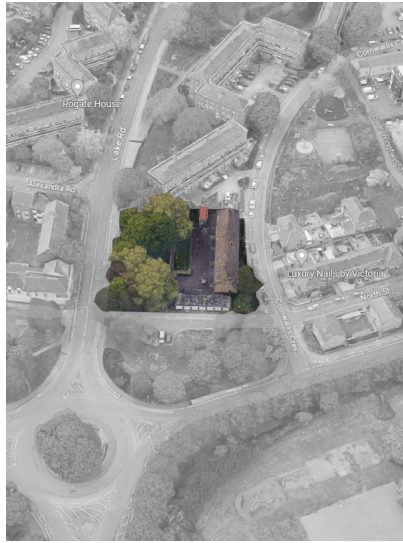
Cabinet Member for Housing & Tackling Homelessness

Appendix 4: Potential sites in scope page 1 of 6

The sites indicated in Appendix 4 show the type of property, location & the element of that property which could receive a mural or other installation. Brief notes next to each site locates the potential. This list is not intended to be exhaustive or definitive & the process outlined in this paper would, if approved give the formal method for gaining permission to deliver a project at these (or other) sites.

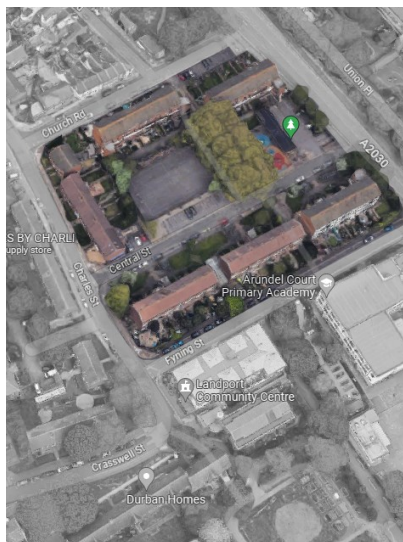
Cornwallis Crescent

Garage gables are in scope



Refuse stores at Chatfield House, Corehampton House & Soberton House.

All the small brick built enclosures are in scope



48 All Saints Road

Boundary wall is in scope



Cabinet Member for Housing & Tackling Homelessness

Appendix 4: Potential sites in scope page 2 of 6

Cheeryble House, Wingfield Street

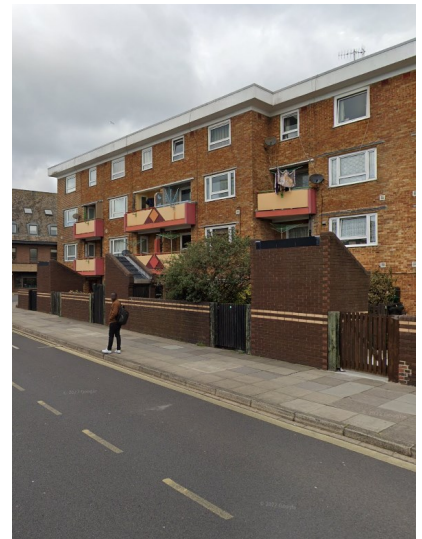
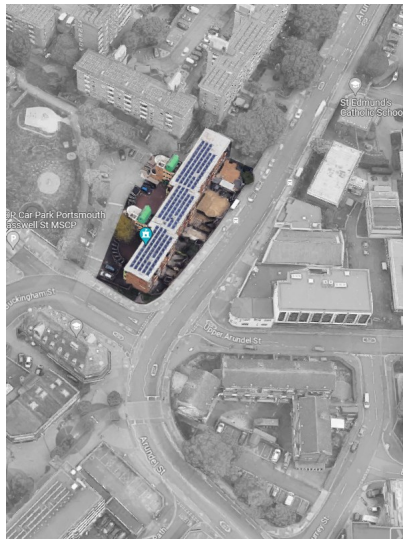
Storage structures are in scope



Canberra House

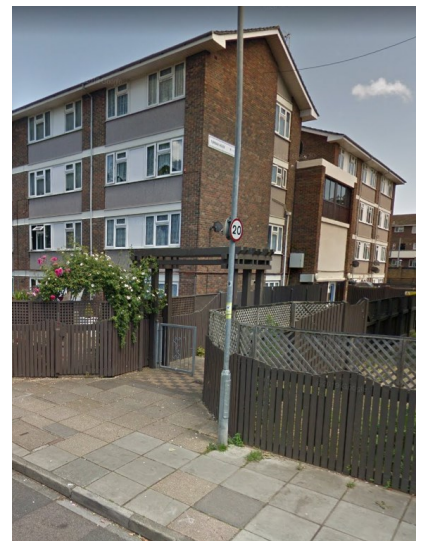
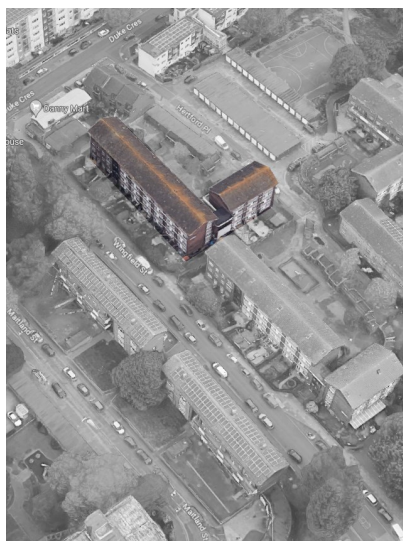
Main structure not in scope

Boundary walls & refuse stores suitable and in scope



Tupman House

Rendered panel illustrated opposite is in scope (stair core), gable walls



Cabinet Member for Housing & Tackling Homelessness

Appendix 4: Potential sites in scope page 3 of 6

Wellington & Waterloo Streets

Low refuse structure are in scope.

(Wellington Street shown)



Plymouth Street

South facing boundary wall is in scope & is highly visible.



Cowdray House

Staircore wall is in scope

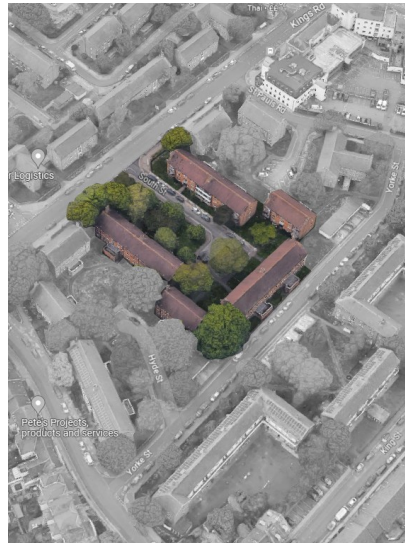


Cabinet Member for Housing & Tackling Homelessness

Appendix 4: Potential sites in scope page 4 of 6

South Street

Gables not suitable, refuse stores to the north of the blocks (facing Yorke Street) are in scope.



Watts Road

Refuse stores and rendered panel illustrated opposite are in scope, gable walls are not.



Idsworth House Garages

Refuse stores and stair core are in scope, gable walls are not.



Cabinet Member for Housing & Tackling Homelessness

Appendix 4: Potential sites in scope page 5 of 6

Longs Walk

Gables are suitable & in scope.
(image shows North gable)



Kilmiston Close

Gable walls and stair cores are in scope.



Mayo Close gable wall

Further investigation required but potentially significant elements of this block are in scope



Cabinet Member for Housing & Tackling Homelessness

Appendix 4: Potential sites in scope page 6 of 6

Central Street & Playcourt

Refuse store structures and low walls around playcourt are in scope.



3 Turner Road

Gable wall and boundary wall are in scope.

